



Flowerdown Heritage and Country Park

The Northern non-Brownfield site

Land Ownership

Land Usage, Boundaries & Curtilage

The Littleton Stud

Suggested non-Brownfield areas:-

1. Flowerdown Heritage and Country Park

and the

2. *Site of Interest for Nature Conservation (SINC)*

Sir John Moore's Barracks as Brownfield

The Littleton Local/Settlement Gap

CONTENTS

1	List of figures	4
2	Key Points to take away from this document.....	5
3	Historical changes in Land Ownership of Flowerdown	7
3.1	Littleton Stud and the Flowerdown fields to the south	9
4	Government Guidance for Brown Field exclusions.....	12
5	The photographic evidence supporting non-Brownfield status	13
6	Our Proposed division of non-Brownfield & Brownfield areas.....	22
1.1	Non-Brownfield areas	23
1.2	Brownfield area	25
1.3	Summary table of proposed division of the entire Flowerdown site.....	25
7	The Winchester City Council's July 2015 position on the status of Flowerdown	26
8	The Littleton & Harestock Parish Council and the Local Gap	27
9	Appendix The Flowerdown Heritage & Country Park	29
10	References	30

1 LIST OF FIGURES

Figure 1 Original Flowerdown land parcels.....	8
Figure 2 The Church Lane footpath on the northern boundary of Flowerdown leading to the Roman road. Flowerdown is on the other side of the hedge to the right.	9
Figure 3 Autumn at the Littleton Stud	9
Figure 4 Some Stud facilities (DM).....	10
Figure 5 A tranquil scene at the Stud (DM).....	10
Figure 6 ...and yet another win for the Stud!	10
Figure 7 Stud & Flowerdown Boundary	11
Figure 8 Aerial view of part of the Stud (Point A) Main Road is bottom right (DM)	11
Figure 9 The Littleton Stud fields relative to the northern boundary of Flowerdown.	11
Figure 10 Harestock Farm fields in the 1940s and 50s.....	13
Figure 11 Late 1930s OS Map of the WT Station (North is roughly to the right!)	14
Figure 12 1950s Aerial view of Flowerdown	15
Figure 13 1950s-1960s Aerial photo indicating limited land usage by HMS Flowerdown.	16
Figure 14 A higher resolution 1950s-1960s Aerial photo showing the area occupied by HMS Flowerdown	17
Figure 15 1983 Aerial photo of the Sir John Moore Barracks Construction site under construction.....	18
Figure 16 1985 Satellite view of Flowerdown	19
Figure 17 1999 Satellite view of Flowerdown	19
Figure 18 2000 Satellite view of Flowerdown	20
Figure 19 2005 Satellite view of Flowerdown	20
Figure 20 2019 Satellite view of Flowerdown	21
Figure 21 2021 Flowerdown showing the 1983 tree planting on the undeveloped land.....	21
Figure 22 Proposed 'Northern' Non-Brownfield (Flowerdown Park) and SJM Brownfield sites	23
Figure 23 Flowerdown Heritage & Country Park (Northern Non-Brownfield)(Northwest of Sir John Moore Barracks of about 25 Ha)	24
Figure 24 Southwestern 'SINC' Non-Brownfield site of 20 Ha.....	24
Figure 25 Sir John Moore Barracks 'built site' Brownfield of about 40 Ha	25
Figure 26 The present Littleton Settlement/Local Gap and Countryside.....	27
Figure 27 The Local Gap aligned with SINC site along Harestock Road.....	28
Figure 28 The Local Gap moved North and West.	28

2 KEY POINTS TO TAKE AWAY FROM THIS DOCUMENT

Have you read the first of the LHPC reports “*Flowerdown Sir John Moore Barracks - A Planning Overview*”? You will find this on the Littleton & Harestock Parish Council website at <https://lhpc.org.uk/flowerdown/> right down at the bottom of the web page!

This second report recommends practical steps that could be taken to provide enhancement and protection to the flora & fauna detailed in the first. It takes a closer look at the Flowerdown estate land boundaries, ownership and use. It concludes that the MoD Flowerdown estate should be divided into Brownfield and non-Brownfield areas and that the Littleton Local Gap be redefined. The northern non-Brownfield site adjacent to Littleton Stud should be placed into the public domain and maintained as “re-wilded” chalkland provisionally called the Flowerdown Heritage and Country Park. The founding principles of the Park are outlined in the Appendix.

A research paper on the military history of MoD Flowerdown over the last 100+ years can be found at <http://www.littletonandharestock.org/local-history-archive/> It is the intention of the LHPC to dedicate the proposed Heritage Park to those of the Army, RAF and Navy who served their country with distinction at MoD Flowerdown over the past 100+ years. A Heritage trail is envisaged with information panels to interpret the military history. To celebrate the close connection of the HMS Flowerdown Y Station with Bletchley Park, an annual Coding school is proposed for local youth at the Littleton Millennium Memorial Hall.

- *In March 1921, Mr Churchill said “At Flowerdown, there is an electrical and wireless school. I need scarcely say that it is the head of an extremely elaborate, complicated, and mentally dominating study and art, which has its relation to the general purpose we have in hand”.*
- *Air Chief Marshal Sir Hugh Trenchard in 1925 “I consider Flowerdown as the backbone of the Royal Air Force”.*
- *During the WW2, HMS Flowerdown was a vital listening post (Y station) passing top-secret Enigma coded messages to Bletchley Park for de-cyphering. Through its Direction Finding capability it assisted in locating the German pocket battleship Bismarck leading to her sinking by the RNAS. Sir Robert Watson Watt, the father of RADAR was one among many top scientists who worked there.*

Aerial photographs and the military history confirm that the curtilage/boundary of the Flowerdown Brownfield site is just the Sir John Moore Barracks “built-site” bounded by the inner security fence, whilst the northern part of Flowerdown and the southern *Site of Interest for Nature Conservation* (SINC) should be defined as Non-Brownfield land (Countryside/Greenfield).

The Littleton Stud is a prestigious & long-established racehorse breeding concern on the northern boundary of the Flowerdown estate. To maintain its internationally acclaimed success, it must have a quiet countryside setting. It was recently under threat from a proposal to build a ‘Road Scalpings’ Crusher plant at Three Maids Hill. This was refused by the Hampshire County Council. Winchester City Council should support the HCC and the Stud by protecting the area of Flowerdown to the south of the Stud as quiet rural setting.

During 100+ years of MoD ownership, We have found no evidence that any construction was erected on the northern part of the MoD Flowerdown estate apart from tree planting in 1983.

At most, the northern part of Flowerdown might be described as land that was previously developed (PDL) but any such development has, in the process of time, *blended into the landscape*. This land was never built on. This exempts it from Brownfield classification. A strong case can be made for this area to remain in public ownership and provisionally called the **Flowerdown Heritage and Country Park** (See Appendix)

The key question of the exact Flowerdown Brownfield curtilage/boundary is one that may ultimately be decided by the Courts through Judicial Appeal.

A letter in the Parish Council files shows that six years ago, the Winchester City Council’s position on Flowerdown was as follows:-

“Planning policy does not support housing on the Flowerdown site. The barracks sit in land designated as countryside, being outside the settlement boundaries, and our adopted Local Plan does not generally support new market housing development in such areas. About half the land of the barracks falls within a 'Settlement Gap' between Winchester and the nearby village of Littleton. As a result, any proposals for housing that may be brought forward at this time would be contrary to national and local policies. The Council would have no option but to strongly resist such a significant departure from the Local Plan.”



Flowerdown is defined in the current Local Plan as Countryside to the north with the higher planning protection of the Littleton Local/ Settlement Gap to the south. The southern part of Sir John Moore Barracks presently lies within the Littleton Local Gap.



In summary, the MoD Flowerdown estate should be considered as three areas comprising :-
A single large Brownfield area roughly on the site of the Sir John Moore Barracks and two Non-Brownfield countryside/greenfield areas that should remain in the public domain for the benefit the environment and the people of Littleton & Winchester.

Brownfield	Sir John Moore Built site	40 Ha	BROWN
Non-Brownfield	Flowerdown Heritage and Country Park - North of Sir John Moore	25 Ha	GREEN
Non-Brownfield	SINC site	20 Ha	GREEN

3 HISTORICAL CHANGES IN LAND OWNERSHIP OF FLOWERDOWN

The following details reveal a fractured past ownership followed by a gradual consolidation to form the current MoD Flowerdown estate. The areas, given here in Hectares, were presumably surveyed using the techniques of the time. Satellite measurements give slightly different results..

Following the Littleton Enclosures Act 1843, an area of Flowerdown of about 72 Ha, was lost as common land and villagers no longer enjoyed general grazing rights.

The main part of the site to the south, being of some 46 Ha and shown on the map below in pale green, is now occupied by the Sir John Moore Barracks. This land was acquired from Samuel Bostock of Lainston House. James Wood and others were party to the *Deed of Transfer* as Mortgagees. The acquiring authority was the *President of the Air Council* and the transfer was dated 21st September 1920. Later, a small part in the SE corner was sold to BT for a new telephone exchange.

The second and larger part of the remaining 31 Ha to the north is shown in pale yellow and was acquired from Gerald Deane¹ of Knightsbridge, London who was the owner of the Littleton Stud. The acquiring authority was the *Commissioners for executing the office of the Lord High Admiral of the United Kingdom of Great Britain and Ireland*. The date of transfer was 11th January 1949. Gerald Deane established the Littleton Stud to the north of this land.

A small part of this pale yellow land on the western boundary (left), and shown outlined in red, denotes a disposal out of the MoD estate. This land of 4.17 Ha was previously leased to Littleton Parish Council but then subsequently sold to them on the 26th of February 1988. There is a restrictive covenant attached requiring that the land be used only for recreational purposes which prevents the Littleton & Harestock Parish Council from erecting any buildings. It is known locally as the 'Jubilee Field'. The northern part is a wildlife conservation area.

To the eastern side of the pale yellow land is a small strip of about 0.40 Ha marked in orange and was acquired from the Trustees and Mortgagees of Mrs. E. G. Browne, again by the *Commissioners for executing the office of the Lord High Admiral of the United Kingdom of Great Britain and Ireland* on the 24th January 1950.

There are 3 smaller plots of land to the south of the original (green) purchase fronting Harestock Road. The largest in a darker yellow of 2.83 Ha was acquired from Richard Algernon Andrews on the 30th October 1937, again by the *Commissioners for executing the office of the Lord High Admiral of the United Kingdom of Great Britain and Ireland*.

The middle one coloured blue of 1.61 Ha was acquired from The Ledger Hill Trust Company Ltd. by the President of the Air Council on the 2nd of December 1921.

Finally, to the south and coloured brighter green, there is a small piece of land of 0.70 Ha. This was acquired on the 24th February 1925 by the President of the Air Council from Samuel Bostock of Sparsholt Manor (probably the same person who sold the main site to the MoD).

This confirms that the main pale green site was occupied by the *RAF Electrical & Wireless School* from 1925. It comprised the main pale green site, the blue site and the small brighter green site.

Later it passed to the *Royal Navy (H.M.S Flowerdown)* with the addition of the two yellow coloured sites and the orange site.

Examination of the map below and the Google Earth satellite photograph (Figure 21) show that the northernmost yellow land of 31 Ha has always remained unused apart from tree planting.

¹ The Littleton Stud fields shown in lilac to the North of Flowerdown were owned by Gerald Deane 1920 – 1951 then by Bruce Deane (1951 – 1984) and now by Mr. Jeffrey Smith (1984 to the present day).

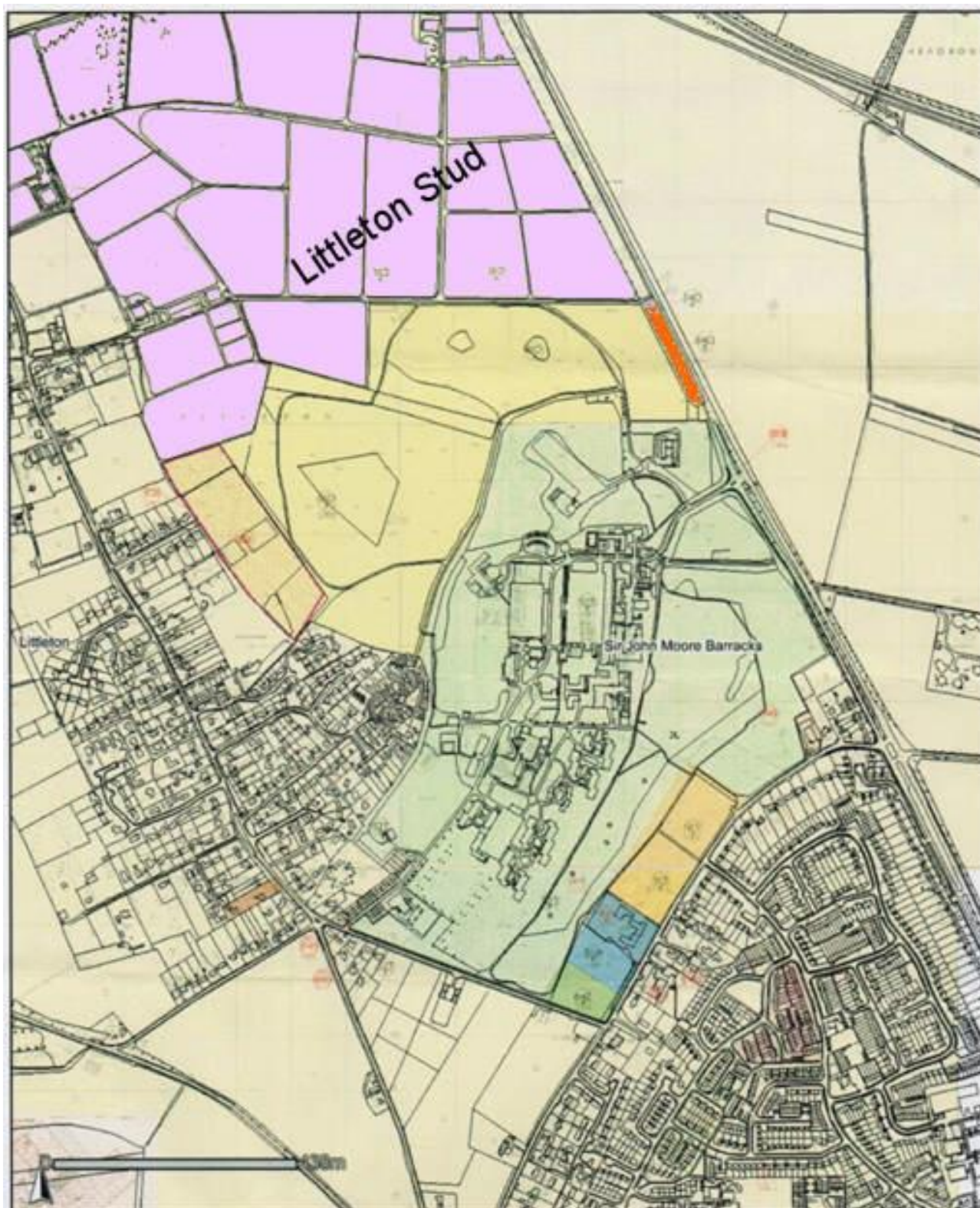


Figure 1 Original Flowerdown land parcels

3.1 LITTLETON STUD AND THE FLOWERDOWN FIELDS TO THE SOUTH



Figure 2 The Church Lane footpath on the northern boundary of Flowerdown leading to the Roman road. Flowerdown is on the other side of the hedge to the right.

On the northern boundary of the MoD Flowerdown estate is the internationally famous Littleton Stud. This multi-million pound racehorse breeding business is owned by Jeff Smith. The Stud has successfully bred and trained racehorses since 1913. Littleton Stud, like those at Lambourne, Epsom and Newmarket, succeed well on these chalkland fields. The Stud has bred three “Horses of the Year” *Chief Singer*, *Lochsong* and *Persian Punch*, each succeeding at the highest level and it continues to produce winners.

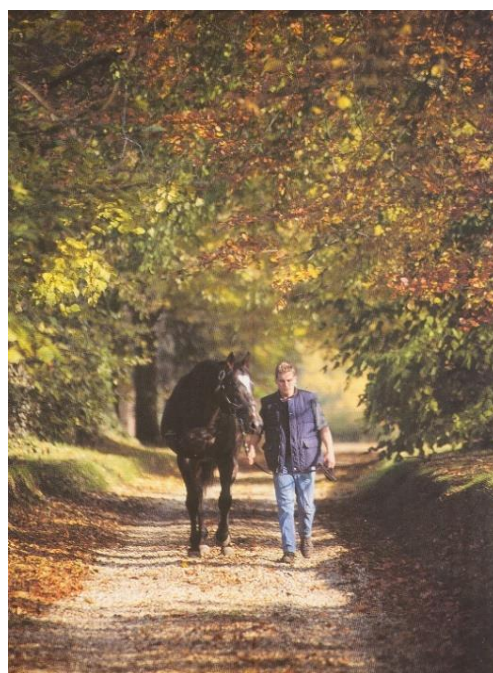
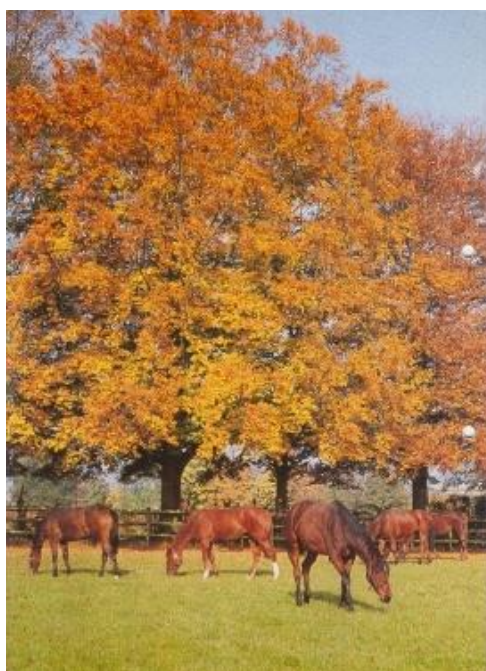


Figure 3 Autumn at the Littleton Stud

N.B. Some photographs below marked DM are by kind permission of the photographer Jordan Pettitt/Solent News. They accompanied a newspaper article <https://dailyuknews.com/uk-news/stud-farm-celebrating-after->

[controversial-plans-for-five-acre-waste-plant-next-door-rejected/](https://www.dailymail.co.uk/news/article-9177111/Stud-farm-celebrating-controversial-plans-five-acre-waste-plant-door-rejected.html) about the threat to the Stud's future posed by the proposed Crusher plant. (and overdevelopment of Flowerdown). It also appeared in the Daily Mail <https://www.dailymail.co.uk/news/article-9177111/Stud-farm-celebrating-controversial-plans-five-acre-waste-plant-door-rejected.html> and the Daily Telegraph (subscription required to view)

<https://www.telegraph.co.uk/news/2020/10/11/horses-champion-stud-farm-could-scared-breed-waste-plant-given/>

<https://www.telegraph.co.uk/news/2021/01/22/stud-farm-wins-planning-battle-waste-centre-elite-horses-need/>



Figure 4 Some Stud facilities (DM)



Figure 6 ...and yet another win for the Stud!

Figure 5 A tranquil scene at the Stud (DM)

As the newspaper articles point out, the financial demands of annually breeding from thoroughbred mares and putting their foals into training is immense. At the present moment the Stud have 87 horses in foal. It is an internationally significant business with animals moving to and from Ireland and Europe. The Stud is one of the largest employers in the area with 15 members of staff on-site. In addition, they use the professional services of our local vets, farriers, builders, forage providers and so on. Racehorses are easily stressed and demand the tranquil surroundings of the Littleton fields. Noise, light, or disturbance on the Flowerdown boundary would be extremely detrimental to this business and could threaten its future. The Stud property and farm fields extend from Three Maids Hill along Lower Farm, also known as Stud Lane, and Main Road to the northern edge of Flowerdown. This thriving business is a credit to Winchester and must be protected.



Figure 8 Aerial view of part of the Stud (Point A) Main Road is bottom right (DM)



Figure 7 Stud & Flowerdown Boundary



Figure 9 The Littleton Stud fields relative to the northern boundary of Flowerdown.

4 GOVERNMENT GUIDANCE FOR BROWN FIELD EXCLUSIONS

An extract from National Planning Policy Framework 2019

PDL	Previously Developed Land	<p>Also known as 'Brown field Land'. The definition for PDL is set out in the National Planning Policy Framework: - Land which is or was occupied by a permanent structure, including the curtilage of the developed land (although it should not be assumed that the whole of the curtilage should be developed) and any associated fixed surface infrastructure.</p> <p>Therefore, this excludes:</p> <ul style="list-style-type: none"> - Land that is or has been occupied by agricultural or forestry buildings. - Land that has been developed for minerals extraction or waste disposal by land fill purposes where provision for restoration has been made through development control procedures. - Land in built-up areas such as private residential gardens, parks, recreation grounds and allotments, and - Land that was previously developed but where the remains of the permanent structure or fixed surface structure have blended into the landscape in the process of time.
-----	---------------------------	--

This table is also to be found in the current Winchester District Local Plan Part 1 - Joint Core Strategy LPP1 chap-7-10-Appendices..

<https://www.winchester.gov.uk/planning-policy/winchester-district-local-plan-2011-2036-adopted/local-plan-part-1-joint-core-strategy-adopted-march-2013-local-plan-review-2006/local-plan-part-1-joint-core-strategy-adopted-2013>

Application of this policy indicates that the whole of MoD Flowerdown estate cannot be arbitrarily designated as PDL (Brownfield).

Clearly Sir John Moore Barracks is the "Brownfield" site, being the "built" area of Flowerdown, surrounded by open countryside that may or may not form its "curtilage" (this may ultimately be decided by the Courts through a Judicial Appeal).

Obviously, for security reasons, the Barrack buildings, parade and sports grounds are surrounded by a 'razor wire' fence protecting the inner sanctum. To enter one passes through the guardhouse.

The outer perimeter boundary of Flowerdown is undefended and nominally marked by hedges, fences, signs and so on. There are many points where the public, at risk of trespass, may wander. An example is the northern boundary along the Church Lane footpath.

1940 - 1960



This drawing shows some interesting detail including H.M.S Flowerdown land that was unused by the military and farmed by Mr. Madrell of Harestock Farm. At the top you can see the minor road that led from the Andover Road entrance to the camp exiting on to Littleton's Chestnut Avenue. The school buses used this route to reach the Camp and Littleton.
(Courtesy of Hampshire County Council Archive 'Photographs & Memories of Life on Harestock Farm'
Reference 51A20/1)

Late 1930s?



Figure 11 Late 1930s OS Map of the WT Station (North is roughly to the right!)

This OS map is of considerable interest as it shows the early RN W/T station (pre-HMS Flowerdown). The Ordnance Survey tree symbols (marked in green) show the boundary between the WT Station at Flowerdown and the northern fields leading to the Littleton Stud. The red line marks the built site area at that time and is prominent & consistent with the aerial photos on the following pages. Look out for this tree red line in the following photos.

1950s

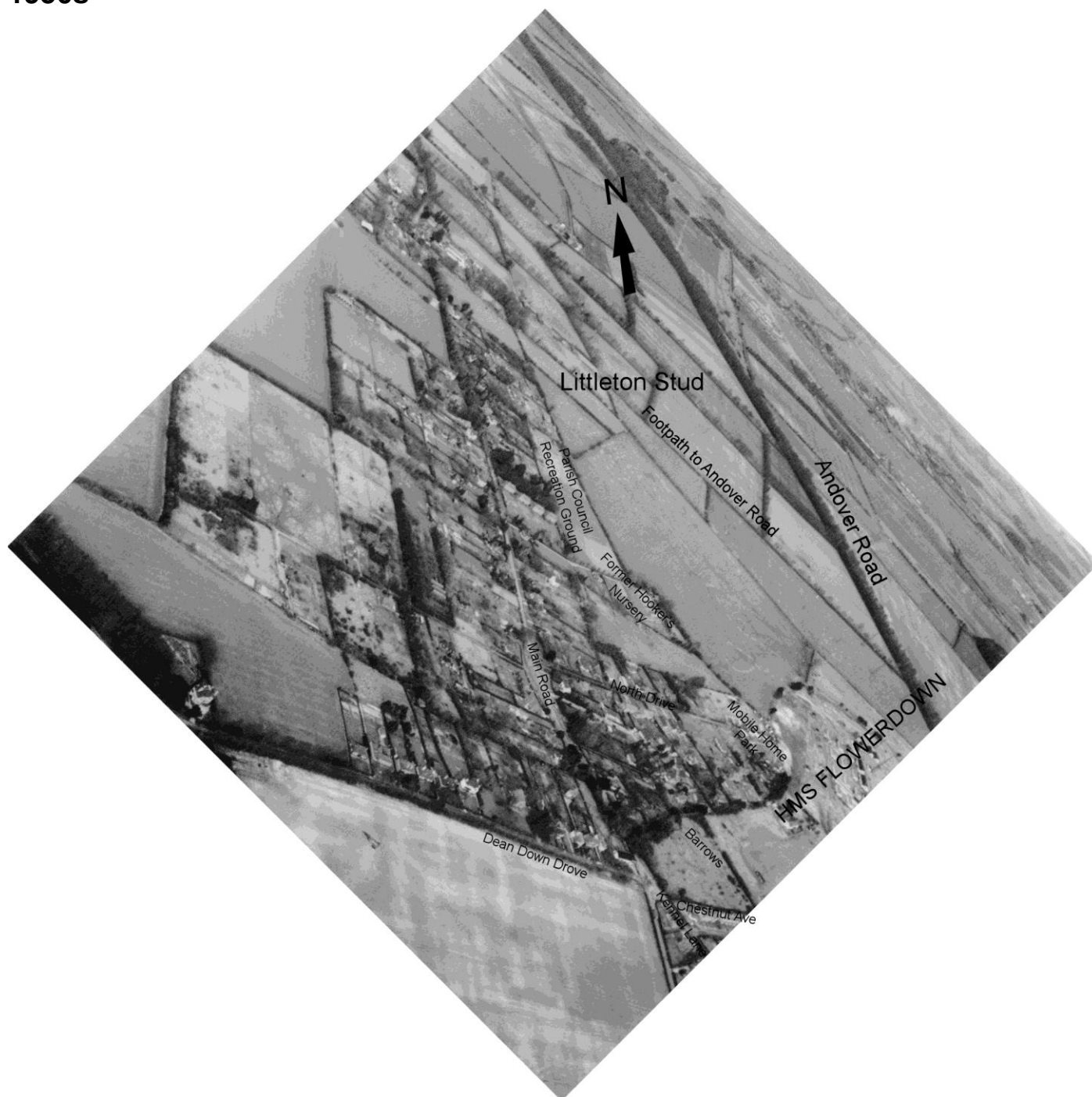


Figure 12 1950s Aerial view of Flowerdown

The photograph shows that the land to the north of HMS Flowerdown extending to the Church Lane footpath was unused by the military and was farmed as cultivated fields. The curve of the treeline is just above the HMS Flowerdown legend. It is noteworthy that we have not come across any other photos showing northern Flowerdown presumably because there was nothing to see except fields.

1950 – 1965



Figure 13 1950s-1960s Aerial photo indicating limited land usage by HMS Flowerdown.

We chose not to rotate this photograph so north is roughly to the right! Note the curve of the treeline boundary with the northern fields. It was taken from an altitude of about 2500 feet and roughly about 1 mile from HMS Flowerdown. One can just see the tall aerial masts of the RN Y station. (The following photograph is the same view but is much clearer!)

The present entrance to Sir John Moore Barracks on Andover Road is somewhere in the middle of the hedge line at the bottom of the photograph.

HMS Flowerdown occupied about 42 Ha, an area to the left (south) marked by the red line and followed the tree line to the Andover Road. The base roughly covered half of the entire Flowerdown estate.

The remainder of the land to the right (north) of the red line was farmed. These fields extended up to the Stud and the Church Lane footpath (Figure 1). Along the red line bordering the base one can see the trees of the northern fields leading up to Littleton Stud.

During the war, Harestock Farm leased and farmed some of the Flowerdown fields along Harestock Road on the left and out of sight in the photo (see Hampshire County Council Archive 'Photographs & Memories of Life on Harestock Farm' Reference 51A20/1).



Figure 14 A higher resolution 1950s-1960s Aerial photo showing the area occupied by HMS Flowerdown

This clearer version of the previous photograph was contributed by Mr. Clive Kidd (Curator of the Heritage Collection at HMS Collingwood) and shows the built extent of the Y Station site. The Andover Road is at near the bottom of the picture. The site's pronounced curved tree line boundary with the northern fields leading to the Littleton Stud are clearly visible towards the right of the photo.

1983

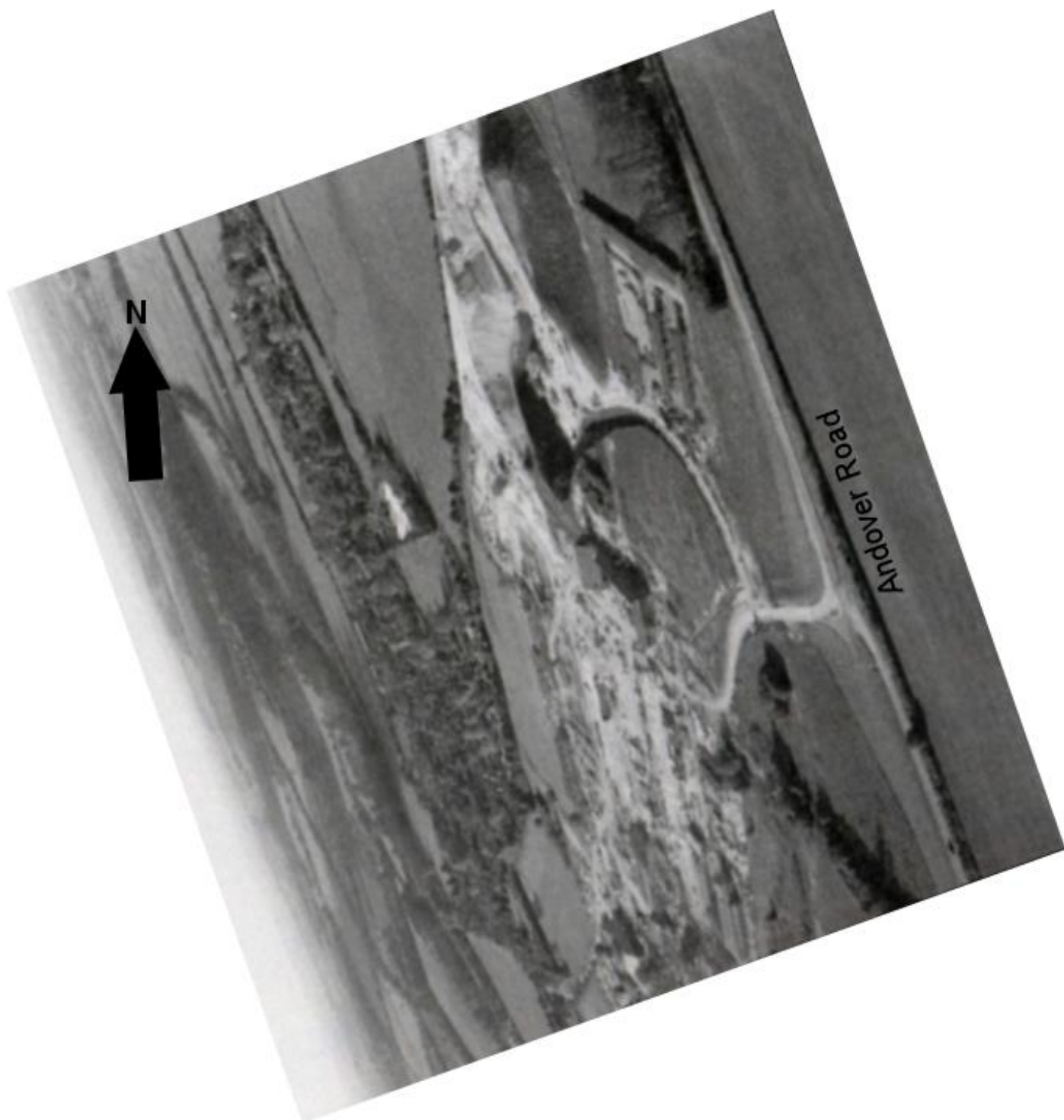


Figure 15 1983 Aerial photo of the Sir John Moore Barracks Construction site under construction

This low resolution photograph shows the relatively small construction site of Sir John Moore Barracks compared with the whole and largely invisible MoD Flowerdown estate to the North. Andover road is on the right of the picture. Littleton is visible beyond the building site with the bright reflection of the greenhouses of the former Hooker's Nursery in the middle.

All of the old HMS Flowerdown WW2 buildings and aerial masts had been removed and the large aerial support blocks buried under the large chalk embankments seen at the top enclosing the car park.

1999 (Google Earth Pro Historical Imagery)

31 August 2021

2000 (Google Earth Pro Historical Imagery)



Figure 18 2000 Satellite view of Flowerdown

2005 (Google Earth Pro Historical Imagery)



Figure 19 2005 Satellite view of Flowerdown



An aerial photograph of the Littleton Stud area. The map shows a mix of green fields, brown plowed land, and clusters of buildings. A red pin marks a location in the center-left, near a road labeled 'Littleton'. Other labels include 'Littleton Stud' in large white text at the top, 'Church Lane Footpath', 'Flowerdown', 'New Rd', 'Royale Close', 'Littleton', 'Fyfield Way', 'Valley Rd', 'North Dr', 'South Dr', 'Chestnut Ave', 'Kenel Ln', 'Harestock', 'Harestock C', 'Rockbourne Rd', 'Bradley Rd', 'Bulley Rd', 'Hastock Rd', 'Vanguard Hill', 'Sir John Moore Barracks', 'Woodman Ln', 'Littleton Ln', and 'Mains'. A copyright notice '© 2020 Google' is visible at the bottom left.

Littleton & Harestock Parish Council

31 August 2021

6 OUR PROPOSED DIVISION OF NON-BROWNFIELD & BROWNFIELD AREAS

After the process of gradual land ownership consolidation described earlier, the extensive evidence presented here indicates that, excepting the Sir John Moore Barracks 'Brownfield' area, there is no evidence of development or construction at any point excepting long abandoned mast supports.

In summary the area has:-

1. Remained undisturbed landscape of grass chalkland in the northern area, apart from tree planting.
2. Maintained landscape and ecological value.
3. The area meets the national policy criteria for being excluded from brownfield designation.

There is a presumption in planning policy, hitherto, in favour of retaining the area as countryside and against any form of development.

Therefore, the areas, especially the northern area, can be considered 'non-brownfield' or greenfield sites, worthy of enhanced natural and wildlife protection.

Therefore, given both its historical and ecological value, it provides a strong and unique case for the creation of a public asset in the form of a Heritage and Country Park supporting educational, conservation and recreational value and needs.

With these foundations, the case for acceptance of the principle of this concept is made. To take this forward, the next steps are to give the concept a firm practical basis that requires consideration to be made of various factors, including:-

- What will be meant by bringing it into the public realm and civil society
- Ownership and institutional responsibilities
- Management responsibilities and functions
- Resourcing and funding arrangements
- Operational requirements

In doing so, the current custodians and residents of the parish would be providing a worthy asset for the future whilst respecting the legacy of the site's past role and use. With commitment and imagination from several bodies, stakeholders and residents, a moment has come to grasp a wonderful opportunity.

Satellite photographs of the defined Non-Brownfield and Brownfield areas follow:-

1.1 NON-BROWNFIELD AREAS



Figure 22 Proposed 'Northern' Non-Brownfield (Flowerdown Park) and SJM Brownfield sites

Note: The proposed SINC non-Brownfield site in the SE (bottom right) is out of view in this photograph

This 1983 photograph was taken by the Norwest Holst construction company after completing the Sir John Moore Barracks. It helped them understand the northern area of Flowerdown before they started planting the 38,500 trees.

- The proposed Brownfield site (photo bottom right) is an area of about 40 Ha.
- The first of the proposed non-Brownfield sites (Flowerdown Park) is marked by the 'arrowed' green boundary line and is about 25 Ha.
- The second of the proposed non-Brownfield sites is out of shot in this photograph but it roughly corresponds to the HCC SINC site of 20 Ha to the south east bordering Harestock Road. We suppose that had the SINC site been built on or disturbed, then the Hampshire County Council Biodiversity Information Centre would not have carried out their survey.

<https://www.hants.gov.uk/landplanningandenvironment/environment/biodiversity/informationcentre>

The green areas below were measured using www.freemaptools.com/area-calculator.htm and Google Maps. The blue markers show the points used to outline the area.

Note that each of the three images has a quite different scale. So, just compare the green perimeter outlines that show the proposed Brownfield and Non-Brownfield boundaries. The area calculator provided the areas in Hectares.

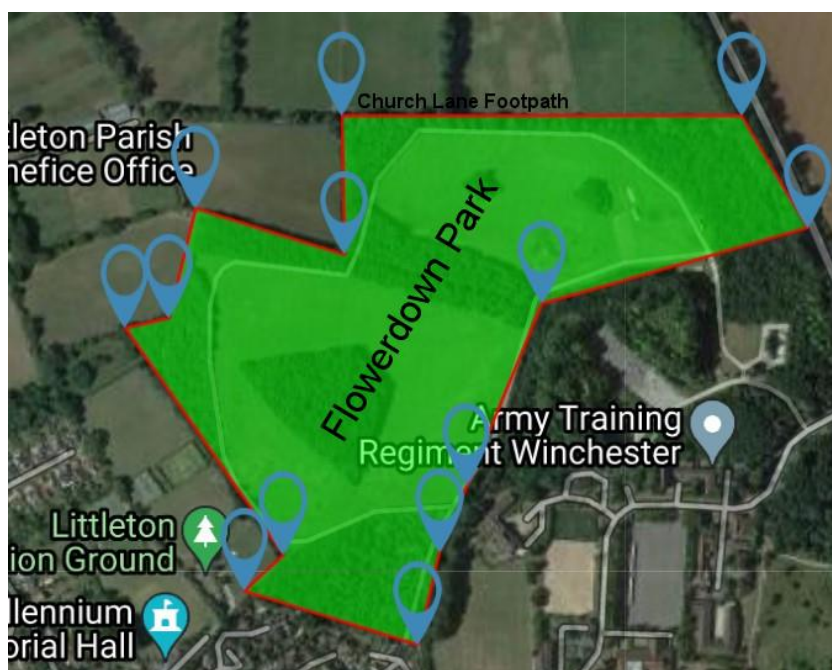


Figure 23 Flowerdown Heritage & Country Park (Northern Non-Brownfield) (Northwest of Sir John Moore Barracks of about 25 Ha)

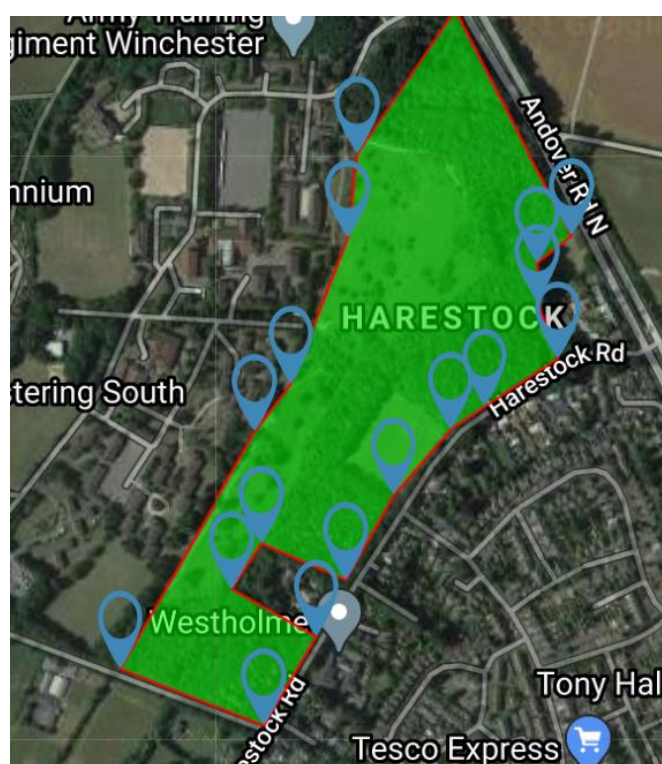


Figure 24 Southwestern 'SINC' Non-Brownfield site of 20 Ha.

1.2 BROWNFIELD AREA



Figure 25 Sir John Moore Barracks 'built site' Brownfield of about 40 Ha

1.3 SUMMARY TABLE OF PROPOSED DIVISION OF THE ENTIRE FLOWERDOWN SITE

The entire MoD Flowerdown Estate size is about		85 Ha	
Non-Brownfield	North of Sir John Moore extending to Church Lane Footpath (Flowerdown Heritage and Country Park)	25 Ha	GREEN
Non-Brownfield	SINC site	20 Ha	GREEN
Brownfield	Sir John Moore Built site	40 Ha	BROWN

7 THE WINCHESTER CITY COUNCIL'S JULY 2015 POSITION ON THE STATUS OF FLOWERDOWN

This letter on file shows the WCC position of 6 years ago, but one must ask what has changed since? Nearby Kings Barton is partially built but the demand for their homes appears to be slow with less than 300 built to date. The full impact on Littleton's facilities has not been determined but we are already seeing increased usage of our Recreation Ground and Car Park.

The extracts below are from a WCC July 2015 letter addressed to Mark Lancaster, then *Undersecretary of State for Defence*, stating the Council's position on any development of Flowerdown, noting that it is designated as Countryside and within the Littleton Settlement (Local) Gap

https://www.google.com/search?safe=active&source=hp&ei=iBUAYMDSFo6yUujmJPgG&q=Leader-s-letter-to-Defence-Minister-re-Sir-John-Moore-Barracks-July-2016&oq=Leader-s-letter-to-Defence-Minister-re-Sir-John-Moore-Barracks-July-2016&gs_lcp=CgZwc3ktYWIQA1C-C1i-C2CbGGgAcAB4AIABNogBNpIBATGYAQcQAQKqAQGgAQdnd3Mtd2l6&sclient=psy-ab&ved=0ahUKEwjAtsDEIJvuAhUOmRQKHWgzA28Q4dUDCAk&uact=5

Extract 1

Planning policy does not support housing on the Flowerdown site. The barracks sit in land designated as countryside, being outside the settlement boundaries, and our adopted Local Plan does not generally support new market housing development in such areas. About half the land of the barracks falls within a 'Settlement Gap' between Winchester and the nearby village of Littleton. As a result, any proposals for housing that may be brought forward at this time would be contrary to national and local policies. The Council would have no option but to strongly resist such a significant departure from the Local Plan.

Extract 2

Our policy covering development in the countryside (MTRA5) of our Local Plan Part 1 does support the retention and development of major commercial and educational establishments, including Defence establishments. Should a decision be made to vacate these or any other military facility in our District, Winchester City Council would have a very strong desire to see such sites retained for high value employment, such as a science park. Having spoken to the Universities of Southampton and Winchester and many other organisations in recent months, I know that there is great interest for such a scheme in or around Winchester.

Extract 3

I would hope that any Ministerial decision about the closure of any defence establishment in Winchester is not made on the assumption that the site can be developed for housing. If it is to be promoted for redevelopment, this can only be carried out through the proper plan led process as part of a future review of the Local Plan. This would allow proper consultation and consideration of the many other sites that have previously been promoted for housing when the current plan was being developed. It would also allow evidence to support any alternative use of the Flowerdown site to be gathered and considered to justify such uses, exactly as Government policy requires.

Extract 4

Winchester City Council is very keen to exploit opportunities for use of any redundant public land, particularly to retain local employment. Should a decision be made to vacate Sir John Moore Barracks, the DIO should be aware that Winchester City Council will resist any proposal to develop the barracks primarily for housing. I would expect the local community would also voice significant concerns about such a proposal. However, we would be very supportive of any appropriate proposal that conforms with our Local Plan.

8 THE LITTLETON & HARESTOCK PARISH COUNCIL AND THE LOCAL GAP

The Littleton Village Design Statement is an adopted adjunct to the Winchester District Local Plan Review (2006) providing supplementary guidance on planning decisions. The current 2009 VDS is presently being updated by the Littleton & Harestock Parish Council.

<https://www.winchester.gov.uk/assets/attach/3731/LittletonVillageDesignStatement.pdf>

The VDS states that “*the entire Flowerdown site (see 7.42 above) is designated in the current Local Plan as Countryside (marked in green). The southern part of Flowerdown has a higher level of protection being designated as a Settlement/Local Gap (marked in yellow). The Settlement/Local Gap is intended to prevent a conurbation or coalescence between the Harestock and the Littleton settlements*”.

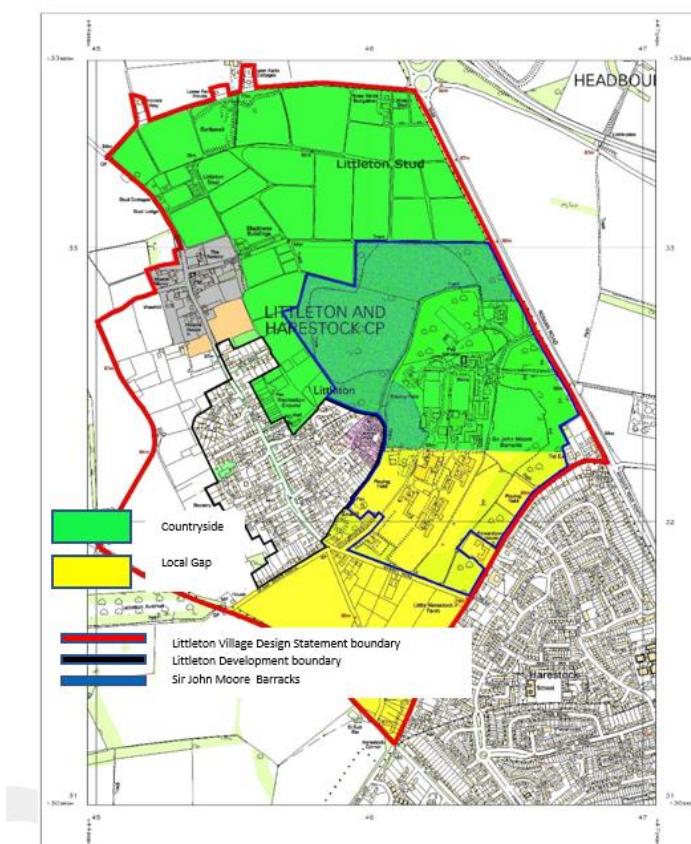


Figure 26 The present Littleton Settlement/Local Gap and Countryside

In an earlier WDLP, the Littleton Settlement/Local Gap extended right up to the northern edge of Flowerdown bordering the Stud. In the mid-1990's during one of the perennial WDLP reviews, the Planning Inspectorate decreed that the northern boundary of the gap should be moved South to its present position.

To avoid a north Winchester conurbation developing over the coming years absorbing Littleton village, we need to maintain the Local/Settlement Gap.

The speculative maps below are simply intended to kick-off a discussion about the Local Gap given the proposed sale of the Flowerdown estate.

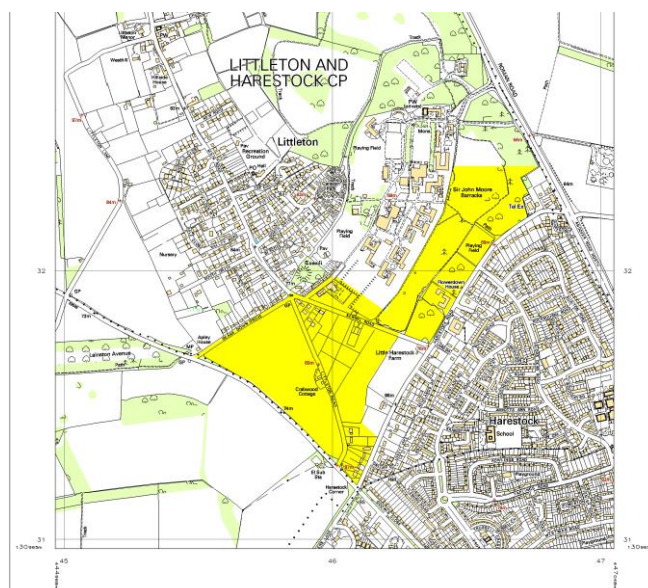


Figure 27 The Local Gap aligned with SINC site along Harestock Road.

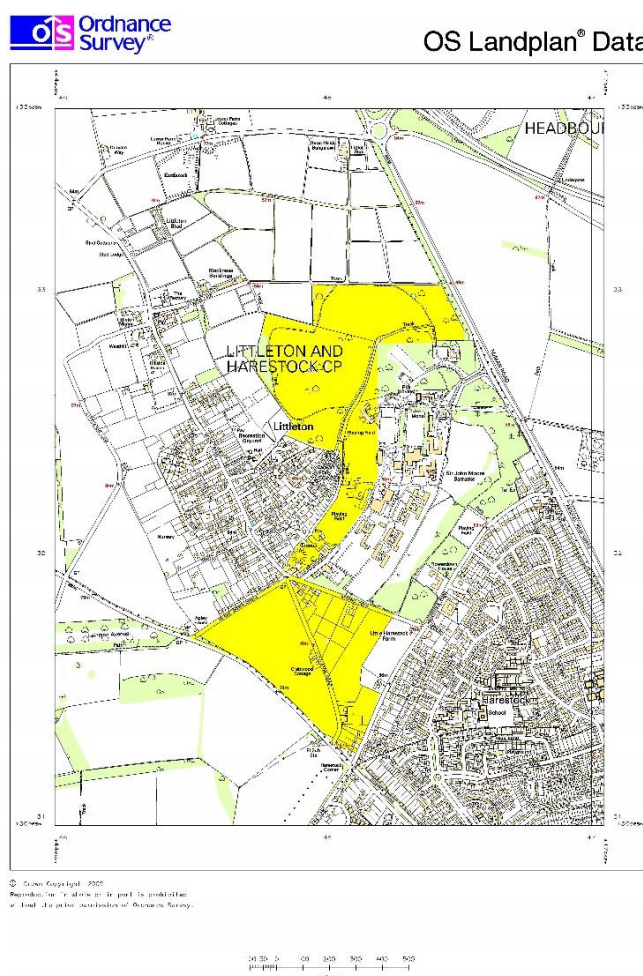


Figure 28 The Local Gap moved North and West.

This maybe the preferred solution because it extends the Local Gap to the northern boundary of Flowerdown bounded by the Littleton Stud.

9 APPENDIX THE FLOWERDOWN HERITAGE & COUNTRY PARK

The founding principle of the Heritage Park will be to conserve and enhance the natural and cultural heritage of this, increasingly rare, Winchester chalk downland.

This will be accomplished through the promotion and sustainable use of the natural resources of northern Flowerdown and also by promoting public understanding and enjoyment (including enjoyment in the form of recreation) of the special qualities of our area.

As we have seen, the proposed northern Park borders the tranquil setting of the fields of Littleton Stud and part of the proposed park boundary is the Church Lane Right-of-Way footpath leading to the HCC



Countryside Service's *Three Maids* linear park land bordering the nearby Roman Road thus extending recreational opportunities.

The LHPC believe it to be crucially important to maintain this quiet and peaceful area for the long term well-being of the public and the continuing presence of the adjoining Stud lands.

The word Heritage was carefully chosen to allow the public to reflect on the military past of Flowerdown and on the thousands of men and women who have served their country there over the past century.

Thus, it should also be a place for reflection on our military history. An underlying aim will be to promote and educate the public, especially the younger members by providing a place of education on historical and technical matters for local schools including the nearby Henry Beaufort Comprehensive School. The Littleton Millennium Memorial Hall is itself a war memorial to those local lads who died in WW1 and to that end it is envisaged that an annual Coding school would be held there providing an opportunity for young people to be introduced to computer software and to understand the crucial engineering developments made at HMS Flowerdown and Bletchley Park. It is expected that IBM UK Laboratories at Hursley and Arquiva at nearby Crawley would support this.

In our Covid-traumatised times, the Park would help to promote the spiritual well-being that can be felt in a peaceful environment.

Hampshire chalkland is unique and the Park would provide an opportunity to learn about the Flora and Fauna present on the southerly Flowerdown *Site of Interest for Conservation*.. The Park ecology would also be managed to support a similar species distribution as that on the SINC site with the long term view of itself earning SINC status.

10 REFERENCES

Flowerdown Land Ownership

Flowerdown Sir John Moore Barracks - A Planning Overview <https://lhpc.org.uk/wp-content/uploads/2021/02/Flowerdown-Sir-John-Moore-Barracks-A-Planning-Overview.pdf>

Hampshire County Council Archive 'History of Flowerdown Camp' Reference 11A20/1 Brian Middleton <http://www.littletonandharestock.org/wp-content/uploads/2021/05/Flowerdown-Military-Base-Version-3.0-Full-revision-.pdf>

Littleton Local History Group (LLHG) Archives
FLOWERDOWN. 845.1 Light Division Depot, Sir John Moore Barracks including-,
Purchase of Flowerdown land by MOD. Map and history from PLL 1/3/2010.

<https://documents.hants.gov.uk/landscape/historic-settlement/LittletonHistoricRuralSettlementpublication.pdf>

Hampshire County Council Archive 'Photographs & Memories of Life on Harestock Farm' Reference 51A20/1

Worthy Papers 'The Winchester Racecourse' by Robin Greenwood published by The Worthys Local History Group

Photographs

Stud photographs marked DM are reproduced by kind permission of Jordan Pettitt.
Senior Photographer +44 (0) 7736 149 405 Solent News and Photo Agency +44 (0) 2380 458800
www.solentnews.co.uk

Other Stud photographs by kind permission of Littleton Stud management

Private collection of aerial photographs and the Littleton Local History Group (LLHG) Archives
N.B. These photo prints have a higher resolution than the scanned copies used in this document.

The various areas of the Flowerdown site

www.freemaptools.com/area-calculator.htm and Google Maps.

Current Planning Status of Flowerdown

Littleton Village Design Statement (VDS)

<https://www.winchester.gov.uk/assets/attach/3731/LittletonVillageDesignStatement.pdf>

Winchester District Local Plan Local Plan Review 2006 (WDLP Review 2006)

<https://www.winchester.gov.uk/assets/attach/4049/Local-Plan-Review-Adopted-July-2006-1-.pdf>

Winchester City 2017 - 2020 Brown Field Registers

<https://www.winchester.gov.uk/planning-policy/monitoring-and-other-planning-documents/brownfield-land-register>

National Planning Policy Framework 2019

https://assets.publishing.service.gov.uk/government/uploads/system/uploads/attachment_data/file/810197/